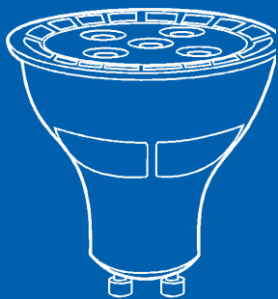


# LED GU10



LED Lighting

# LED GU10



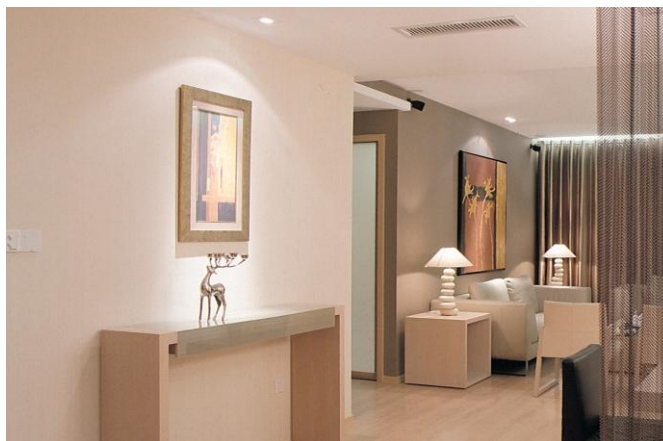
## LED GU1001

### Features:

- ©Optical design: High quality PC shade, high transparency
- ©High-end LED chip: Encapsulation by golden thread, 80 percent energy saving.
- ©Intelligent IC power supply: Constant current driver, with overload, short-circuit, under voltage protection
- ©Plastic plus aluminum lamp body: excellent heat dissipation

### Applications:

Household, hotel, villa, shopping mall, meeting room, hospital, office etc.



### Technical parameter

Model No.	Power(W)	Ra	CCT(K)	Dimensions D1×H(mm)	Lumen(lm)	Input Voltage(V)	Beam Angle (°)
GNEP-GU100100331	3	70	3000	Ø50×53	210	AC180-264V	35°
GNEP-GU100100341	3	70	4000	Ø50×53	210	AC180-264V	35°
GNEP-GU100100361	3	70	6000	Ø50×53	210	AC180-264V	35°
GNEP-GU100100531	5	70	3000	Ø50×53	350	AC180-264V	35°
GNEP-GU100100541	5	70	4000	Ø50×53	350	AC180-264V	35°
GNEP-GU100100561	5	70	6000	Ø50×53	350	AC180-264V	35°
GNEP-GU100100731	7	70	3000	Ø50×53	490	AC180-264V	35°
GNEP-GU100100741	7	70	4000	Ø50×53	490	AC180-264V	35°
GNEP-GU100100761	7	70	6000	Ø50×53	490	AC180-264V	35°